

**JOHN
REED**

**ART
IN
PROGRESS**



ART IN PROGRESS

Art in progress : after years of sculpting inspired by the anatomy of the human body, the need for other three-dimensional forms of expression gradually grew.

This became an aspiration to abandon the figurative. My search for abstraction started.

It became a period of building up and breaking down because of not being satisfied with the result. I destroyed several works after which they disappeared back into the clay container.

The 18 bronze statues in this photo report are the result of 3 years of perseverance.

Is it possible to achieve such a turnaround from today to tomorrow without any figurative elements emerging? In the series of images below, depending on the angle, several and mostly unconscious suspicions and suggestions of animal and human forms can be discovered.

Today I continue my exciting quest for abstraction unabated.

I modeled a number of images with a pointed surface. These “dots” create a refracted incidence of light on the image surface and give a different view of the volumes.



I first model the sculptures in clay. Then I make a rubber plaster mold from it. With this mold I form a wax copy of the original image. The wax statue is then cast in bronze by the bronze caster using the lost wax technique.

Then I patina the finished image in an appropriate color.

My sculptures are signed "J.Reed" and bear the stamp of the Kunstbronsgieterij De Groeve.

John Reed



doubled

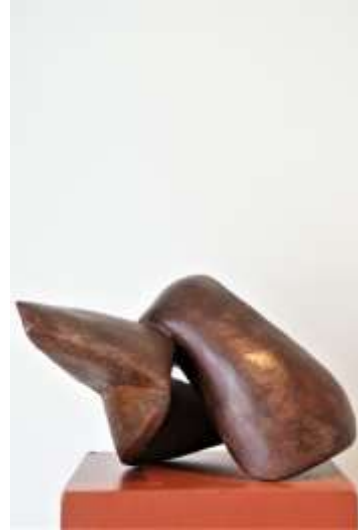
bronze 47 cm

John Reed Art in progress



flow 1

bronze 36x25 cm



flow 2

bronze 36x25 cm



unfo

bronze 58x39 cm



winged

bronze 42 cm



Bow

brons 58 cm

John Reed Art in progress



bow

bronze 58 cm

John Reed Art in progress



chaos

bronze 60 cm



chaos

bronze 60 cm



snaky

bronze 95 cm



snaky

bronze 95 cm



Obelisk

bronze 58 cm



obelisk

bronze 58 cm



flexion

bronze 37cm



flexion

bronze, gilded plaster, colored plaster



return

bronze 45 cm



return

bronze 45 cm



trofee

bronze 35cm



trofee

bronze, gilded plaster

brons 35cm



phi

bronze 30cm



phi

bronze 30 cm



burnout

bronze 43 cm



burnout

bronze 43 cm



balance

bronze 36cm



balance

bronze 36cm



twisted

bronze 35cm



twisted

bronze 35cm



mirrored

bronze 39 cm



mirrored

bronze 39 cm



osmose

bronze 25 cm



osmose

bronze 25 cm



shelter

bronze 30 cm



shelter

bronze 30 cm



totem

bronze 72 cm



bishop

bronze, colored plaster 10 cm



vda

bronze 25 cm

John Reed Art in progress



vda

bronze 25 cm



swing

bronze 30 cm



swing

bronze 30 cm

John Reed

Riet 69 A

B 9190 STEKENE

BELGIUM

00 32 3 779 97 18

john@johnreed.be

www.johnreed.be

